

### Pacific Coast Railway Field Trip

May 4, 2013

Kevin O’Roark led this exploration of the less-celebrated portion of the Pacific Coast Railway (PCRY) right of way from the Santa Maria River crossing south to Los Alamos. The old right of way is clearly visible in many areas with a few other unexpected treats along the way. We met at 10am at the Santa Maria River Levee Trail access, at the end of Preisker Lane, and were back by the published time of 2:30pm! We stopped for lunch at the Historic 1880 Union Hotel Saloon in Los Alamos and visited the only remaining Depot of the Pacific Coast Railway at the east end of Los Alamos. If you’d be interested in a future repeat of this trip, contact us.



The PCRY right of way is well marked through Santa Maria and Orcutt by pipeline markers.



On the way to Los Alamos, the old right of way runs (mostly) along Highway 135.



Lunch at the 1880 Union Hotel in Los Alamos. Continued on page 2...

# Friends of the



## Santa Maria Valley Railroad

### Coming Right Up

We’ve got several activities coming up in just the next few weeks. Please join us for any or all!...

**May 11, 2013**

**National Train Day at SLO.** The railroad and Friends will have a small un-manned display at the SLO Freight House. Come enjoy the festivities and preview the grand opening of the Freight House set for this coming October.

**June 7, 2013**

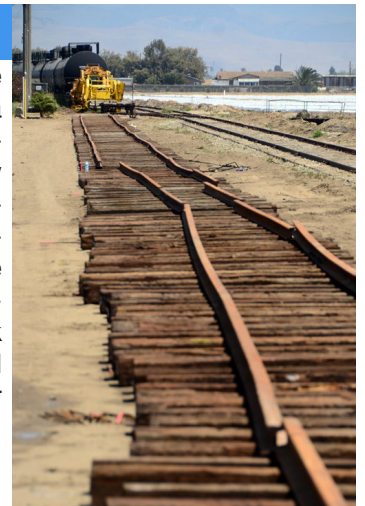
**Art After Dark (SLO).** Tartaglia Realty is hosting Friends member John Roskoski’s photos of the SMVRR and UP Coast Line for Art After Dark from 6-9pm. John is an award-winning rail photographer whose photos have been featured in various rail publications and the Union Pacific Railroad calendar. John’s photos were in the feature article about the Santa Maria Valley Railroad in the recent issue of Trains Magazine. The address is 968 Monterey Street, SLO. Feel free to visit any of the roughly 30 other venues in downtown SLO that will also have special art exhibits that night. A reception will be held at Tartaglia Realty for Friends members.

**June 19, 2013**

**“Recollections of Captain Hancock”.** Jane Brennan, great-granddaughter of Alan Hancock, will present "Recollections of Captain Hancock". Jane will speak about her firsthand experiences and memories with her great grandfather. She’ll also talk about Capt. Hancock’s leadership of the Santa Maria Valley Railroad. This program will be held at the Santa Maria Library’s Shepard’s Hall. Doors open at 5pm. Admission is \$5, or free if you grab dinner from the Cafe right next to the Hall. The program will start at 6pm.

### New Siding

For the first time since the 1950s, the Santa Maria Valley Railroad is expanding its capacity. The new track pictured at right is being put in as the “Midco Extension”, paralleling the mainline from Midco Storage west nearly to Black Road. This new siding will serve increased customer needs.





### SMVRR Article in Trains Magazine

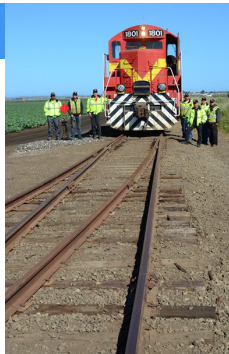
The June 2013 issue of Trains Magazine contains a feature article about the Santa Maria Valley Railroad (SMVRR) written by Friends member and Trains Magazine writer, Tom Murray, and includes featured photos by John Roskoski and Jamie Foster.



The article's title is "A Recipe for Success" and starts on page 42. Tom does a masterful job of describing the SMVRR, including a brief history and much detail about today's activities. It talks about the new ownership beginning in 2006 and the support the railroad received and continues to receive from the Friends organization. Coverage is given to the daily routines, sprucing the place up, and the SMVRR locomotives. The 8-page article is well worth tracking down a copy of the magazine.

### New Switch at Bragur

The Santa Maria Valley Railroad crew recently installed a new switch at the north (west) end of Bragur, making it a siding rather than a spur. Business is increasing at the customer located there, and the railroad has needed another run-around location in the area as well.



### Sponsors

The Santa Maria Valley Railroad is a sponsor of our newsletter and our quarterly programs. The Mortgage House is a sponsor of our meeting room for Friends Board Meetings. We are always looking for sponsors to expand our programs and tours and fund educational activities.

### Thanks to our Facilities Sponsors



of San Luis Obispo

### Pacific Coast Railway Field Trip (cont.)

Continued from page 1...



This PCRY plaque is at Depot Square in downtown Santa Maria. The Santa Maria Valley Railroad would come later, paralleling the PCRY right-of-way at this location.



This PCRY plaque is along Clark Ave in old Orcutt. The view is due north.



This picture of the Los Alamos PCRY depot is actually in the depot which is now an antique mall. It is the only surviving PCRY depot building.

The 3-foot gauge PCRY track is reflecting up through this road pavement along Highway 135 west of Los Alamos. Check it out; the cracks are exactly three feet apart and aligned in the right direction for the PCRY! Out in this area, the right-of-way generally follows the power poles.

See the website for more photos.

